



## INTERNATIONAL APPLICATION PUBLISHED UNDER THE PATENT COOPERATION TREATY (PCT)

<p>(51) International Patent Classification<sup>6</sup> : A61K 31/43, 31/54, 38/10, 39/00, 39/02, 39/395, C07K 16/00, 16/12, 7/04, 7/08</p>	A1	<p>(11) International Publication Number: <b>WO 95/31984</b> (43) International Publication Date: 30 November 1995 (30.11.95)</p>
<p>(21) International Application Number: PCT/US95/04896 (22) International Filing Date: 24 April 1995 (24.04.95) (30) Priority Data: 08/246,988 20 May 1994 (20.05.94) US (71) Applicant: THE REGENTS OF THE UNIVERSITY OF CALIFORNIA [US/US]; 22nd Floor, 300 Lakeside Drive, Oakland, CA 94612-3550 (US). (72) Inventors: CARSON, Dennis, A.; 14824 Vista Del Oceano, Del Mar, CA 92014 (US). SALVATORE, Albani; 721 Niantic Court, San Diego, CA 92109 (US). (74) Agent: BERLINER, Robert; Robbins, Berliner &amp; Carson, 5th floor, 201 North Figueroa Street, Los Angeles, CA 90012-2628 (US).</p>	<p>(81) Designated States: AM, AT, AU, BB, BG, BR, BY, CA, CH, CN, CZ, DE, DK, EE, ES, FI, GB, GE, HU, IS, JP, KE, KG, KP, KR, KZ, LK, LR, LT, LU, LV, MD, MG, MN, MW, MX, NO, NZ, PL, PT, RO, RU, SD, SE, SG, SI, SK, TJ, TT, UA, UG, UZ, VN, European patent (AT, BE, CH, DE, DK, ES, FR, GB, GR, IE, IT, LU, MC, NL, PT, SE), OAPI patent (BF, BJ, CF, CG, CI, CM, GA, GN, ML, MR, NE, SN, TD, TG), ARIPO patent (KE, MW, SD, SZ, UG).</p> <p><b>Published</b> <i>With international search report.</i></p>	
<p>(54) Title: METHOD AND REAGENTS FOR THE TREATMENT OF RHEUMATOID ARTHRITIS</p> <p>(57) Abstract</p> <p>Methods useful in the treatment or prevention of rheumatoid arthritis (RA) are disclosed. Each method is useful in limiting the exposure of the systemic immune system of a human to RA arthritogenic peptides present in the person's gastrointestinal (GI) tract. To this end, one method of the invention reduces the population of arthritogenic peptide producing bacteria in the GI tract, then replaces those bacteria with ones incapable of producing the arthritogenic peptides. Methods for both passive and active immunization of a human against arthritogenic peptides are disclosed, as is a method for identifying persons who are predisposed to develop RA.</p>		

*FOR THE PURPOSES OF INFORMATION ONLY*

Codes used to identify States party to the PCT on the front pages of pamphlets publishing international applications under the PCT.

AT	Austria	GB	United Kingdom	MR	Mauritania
AU	Australia	GE	Georgia	MW	Malawi
BB	Barbados	GN	Guinea	NE	Niger
BE	Belgium	GR	Greece	NL	Netherlands
BF	Burkina Faso	HU	Hungary	NO	Norway
BG	Bulgaria	IE	Ireland	NZ	New Zealand
BJ	Benin	IT	Italy	PL	Poland
BR	Brazil	JP	Japan	PT	Portugal
BY	Belarus	KE	Kenya	RO	Romania
CA	Canada	KG	Kyrgystan	RU	Russian Federation
CF	Central African Republic	KP	Democratic People's Republic of Korea	SD	Sudan
CG	Congo	KR	Republic of Korea	SE	Sweden
CH	Switzerland	KZ	Kazakhstan	SI	Slovenia
CI	Côte d'Ivoire	LI	Liechtenstein	SK	Slovakia
CM	Cameroon	LK	Sri Lanka	SN	Senegal
CN	China	LU	Luxembourg	TD	Chad
CS	Czechoslovakia	LV	Latvia	TG	Togo
CZ	Czech Republic	MC	Monaco	TJ	Tajikistan
DE	Germany	MD	Republic of Moldova	TT	Trinidad and Tobago
DK	Denmark	MG	Madagascar	UA	Ukraine
ES	Spain	ML	Mali	US	United States of America
FI	Finland	MN	Mongolia	UZ	Uzbekistan
FR	France			VN	Viet Nam
GA	Gabon				

METHOD AND REAGENTS FOR THE TREATMENT OF  
RHEUMATOID ARTHRITIS

BACKGROUND OF THE INVENTION

5 1. *Field of the Invention*

The invention relates to the control and prevention of autoimmune disease, in particular rheumatoid arthritis. More specifically, the invention relates to methods and reagents which reduce or prevent the response of a host  
10 to proteins which include an amino acid sequence (Q(K/R)RAA) that is homologous to a sequence contained in certain HLA proteins.

2. *History of the Prior Art*

15 In humans, autoimmune diseases such as rheumatoid arthritis tend to be associated with particular HLA specificities. Rheumatoid arthritis (RA) in particular is presently believed to be associated on a genetic level with the Class II HLA haplotypes DW4, DW14, DW15 (all  
20 with DR4 specificity) and/or DR1. Each of these haplotypes include an amino acid sequence which is commonly referred to as the "susceptibility sequence" (hereafter, "RA susceptibility sequence"; see, SEQ.ID.NOs: 1 and 2). The RA susceptibility sequence is known to  
25 vary at one amino acid; to wit, QRRRA and QKRAA (hereafter, "Q(R/K)RAA"). More than 90% of patients with seropositive RA have also been found to have HLA DR antigens with the RA susceptibility sequence in the third hypervariable region of the molecule.

30

The QRRRA variant of the susceptibility sequence has been identified on HLA haplotypes DW14, DW15 and DR1. The QKRRA variant has been identified on HLA haplotype DW4. Homologs of the variants have also been identified in the  
35 Epstein-Barr virus glycoprotein gp110, as well as the dnaJ heat shock proteins from *Escherichia coli*, as well

as the bacterial species *Klebsiella*, *Proteus*, *Salmonella*, and *Lactococcus*.

Based on the substantial degree of conservation among  
5 prokaryotic dnaJ proteins, it can be expected that the RA  
susceptibility sequence is present in dnaJ produced by  
other microbial species (see, e.g., *J. Bact.*, 175:1637-  
1644 (1993)). Further, based on reports of sequence  
10 homology among eukaryotic dnaJ proteins with other  
eukaryotic and prokaryotic dnaJ proteins, it would not  
necessarily be surprising to find the RA susceptibility  
sequence in eukaryotic dnaJ, although it has not as yet  
been identified in such proteins (see, e.g., Silver, et  
al. *Cell*, 74:5-6 (1993)).

15

In 1992, a report was published which supported the  
theory that the dnaJ protein played a role in the onset  
of rheumatoid arthritis (Albani, et al., *J. Clin.*  
*Invest.*, 89:327-331 (1992)). The authors expressed and  
20 purified recombinant dnaJ (rdnaJ). The rdnaJ was  
specifically bound by antisera raised in rabbits against  
the RA susceptibility sequence from DW4 proteins.  
Antisera raised against rdnaJ also bound the intact DW4  
protein as well as DW4 homozygous B lymphoblasts.

25

Two hypotheses for the role of the RA susceptibility  
sequence on HLA DR1 and DW4 prevailed at the time of the  
above-described report. The first postulated that the RA  
susceptibility sequence controlled binding of an unknown  
30 arthritogenic peptide. The second postulated that the  
sequence bound antigen receptors on T cells, thereby  
influencing the expansion or deletion of a particular T  
cell population. Specifically, under the latter  
hypothesis, the RA susceptibility sequence is believed to  
35 be part of a peptide amino acid sequence presented to T  
cells. This amino acid sequence is apparently recognized  
by the T cells as non-self rather than self. Under both

theories, the onset of RA is believed to emanate at least in part from a failure of the local immune system of the gut to produce secretory immunoglobulins ("IgA") against harmful microorganisms.

5

With the recognition that microorganisms produce peptides having the RA susceptibility sequence, a third theory emerged which postulated that the autoimmune response involved in RA was "learned" as a result of the host's immune response to microbial RA susceptibility sequence peptides. Based on this theory, a therapeutic modality was proposed which would vaccinate humans against RA by administering synthetic conjugates of immunogenic forms of RA susceptibility sequence peptides thereto (see, published PCT application, WO 9014835 (filed 5/31/90), Carson, et al., inventors). The efficacy of the proposed vaccines has not yet been tested in humans.

Another therapeutic modality for controlling the immune response to bacterial antigens believed to be implicated in the onset of RA has been proposed in U.S. Patent No. 4,732,757 to Stolle, et al. Stolle, et al. proposed administering IgG antibodies raised in cow's milk against a broad spectrum of intact bacteria which typically reside in the human gastrointestinal tract. The IgG tested by Stolle, et al., were raised against a mixture of intact organisms without targeting specific bacterial antigens. This patent issued prior to the identification of the RA susceptibility sequence in certain bacterial heat shock proteins, including dnaJ. The antisera described by Stolle, et al. were not, therefore, directed toward RA susceptibility sequence peptides.

None of these approaches to treating RA specifically target arthritogenic peptides before the peptides are presented to the systemic immune system of an RA patient. A need, therefore, exists for a treatment which will not

only ameliorate systemic responses by an RA patient to arthritogenic peptides, but will also prevent exposure of the patient to the arthritogenic peptides through the release of such peptides from the patient's GI tract into  
5 systemic circulation. Ideally, such treatments will be provided either before the patient develops RA or in the early stages of the disease; thus, a need also exists for a method of identifying persons who are genetically predisposed to develop RA.

10

The present invention addresses each of these needs.

#### SUMMARY OF THE INVENTION

The invention comprises several methods for ameliorating  
15 or avoiding host sensitization to microbial arthritogenic peptides, particularly dnaJ. For purposes of this disclosure, the phrase "arthritogenic peptides" will, unless context otherwise requires, refer to proteins and peptide fragments thereof which contain the RA  
20 susceptibility sequence, preferably those of microbial origin.

In one aspect of the invention, IgG, IgA are raised (preferably in milk) against the arthritogenic peptides  
25 (preferably derived from rdnaJ) and administered (preferably by enteral routes and preferably as Fab fragments of the Ig) to an RA patient. In another aspect of the invention, bacteria capable of producing arthritogenic peptides are substantially eliminated from  
30 the gastrointestinal tract of an RA patient then replaced with bacteria engineered to be incapable of expressing the RA susceptibility sequence.

The methods of the invention may be employed separately  
35 or in combination. The invention also encompasses uses for anti-arthritogenic peptide antibodies, including anti-dnaJ antibodies.

The invention also comprises a method for screening candidates for the above-described therapies by detecting *in vitro* cellular immune responses to an arthritogenic peptide.

5

The details of the preferred embodiment of the present invention are set forth in the accompanying drawings and the description below. Once the details of the invention are known, numerous additional innovations and changes  
10 will become obvious to one skilled in the art.

#### BRIEF DESCRIPTION OF THE DRAWINGS

FIGURE 1 quantifies proliferation of cultured lymphocytes from 22 patients with early, untreated RA ("early stage"  
15 RA) following exposure of the cells to rdnaJ. The responses shown by bars in the graph of FIGURE 1 are expressed in terms of a lymphocyte stimulation index; i.e., cpm detected in cultures with rdnaJ/cpm detected in cultures without dnaJ. The control culture consisted of  
20 lymphocytes from humans without RA.

FIGURE 2 quantifies proliferation of cultured lymphocytes from 26 early stage RA patients following exposure of the cells to a synthetic dnaJ peptide having the amino acid  
25 sequence QKRAAYDQYGHAAFE or a mutant dnaJ peptide having the amino acid sequence DERAAYDQYGHAAFE. The control culture consisted of lymphocytes from humans without RA.

FIGURE 3 depicts the results of an inhibition study for  
30 inhibition of anti-dnaJ antibodies produced in separate sera samples from 51 early stage RA patients by rdnaJ. The percent inhibition shown by bars in the graph of FIGURE 2 is expressed in terms of the formula:

$$35 \quad \% \text{ inhibition} = 100 \frac{I - \text{OD}_{460} \text{ with rdnaJ}}{(\text{OD}_{460} \text{ without rdnaJ})}$$

The control sera were obtained from humans without RA.

FIGURE 4 depicts the *in vitro* antibody response of rabbit  
5 sera to rdnaJ as measured by an enzyme-linked  
immunosorbent assay. The results are expressed as the  
mean OD at 405 nm of duplicate plate wells.

#### DETAILED DESCRIPTION OF THE INVENTION

##### 10 I. THEORY OF THE INVENTION

A discovery underlying this invention is that human  
patients with early stage RA have abnormally high  
cellular immune responses to a microbial peptide having  
the RA susceptibility sequence. This observation leads  
15 to the conclusion that RA is triggered or exacerbated by  
immune responses to sterile fragments of bacterial  
antigens that are transported to the joints by monocytes.  
Further, the molecules involved in these immune responses  
are likely to be cross-reactive with the RA  
20 susceptibility sequence on HLA DW4 and DR1, particularly  
the former.

Although the invention is not limited to or dependent  
upon the following theory concerning the pathogenesis of  
25 RA, the theory is provided as a reasonable explanation of  
why and how the methods of the invention exploit the  
immune mechanism likely to be involved in RA. More  
particularly, the granulation tissue of the rheumatoid  
pannus is filled with cells of the monocytic lineage. In  
30 humans (as opposed to lower animals) these tissue  
macrophages do not divide efficiently, and must be  
replenished continually from circulating blood monocytes.  
It is reasonable to suppose that immune complexes  
containing dnaJ and IgG antibody to arthritogenic peptide  
35 form first in the intestinal mucosal region, and are  
picked up by circulating blood monocytes with Fc  
receptors.



The control sera were obtained from humans without RA.

FIGURE 4 depicts the *in vitro* antibody response of rabbit  
5 sera to rdnaJ as measured by an enzyme-linked  
immunosorbent assay. The results are expressed as the  
mean OD at 405 nm of duplicate plate wells.

#### DETAILED DESCRIPTION OF THE INVENTION

##### 10 I. THEORY OF THE INVENTION

A discovery underlying this invention is that human  
patients with early stage RA have abnormally high  
cellular immune responses to a microbial peptide having  
the RA susceptibility sequence. This observation leads  
15 to the conclusion that RA is triggered or exacerbated by  
immune responses to sterile fragments of bacterial  
antigens that are transported to the joints by monocytes.  
Further, the molecules involved in these immune responses  
are likely to be cross-reactive with the RA  
20 susceptibility sequence on HLA DW4 and DR1, particularly  
the former.

Although the invention is not limited to or dependent  
upon the following theory concerning the pathogenesis of  
25 RA, the theory is provided as a reasonable explanation of  
why and how the methods of the invention exploit the  
immune mechanism likely to be involved in RA. More  
particularly, the granulation tissue of the rheumatoid  
pannus is filled with cells of the monocytic lineage. In  
30 humans (as opposed to lower animals) these tissue  
macrophages do not divide efficiently, and must be  
replenished continually from circulating blood monocytes.  
It is reasonable to suppose that immune complexes  
containing dnaJ and IgG antibody to arthritogenic peptide  
35 form first in the intestinal mucosal region, and are  
picked up by circulating blood monocytes with Fc  
receptors.

Some of these antigen-loaded monocytes then may migrate systemically to the joints. The T lymphocytes from individuals with the RA susceptibility sequence probably have been educated to hyperrespond to dnaJ, such that  
5 tiny amounts of antigen would suffice to initiate joint inflammation. Very small quantities of a common bacterial antigen might never be detected by classic immunologic means. Moreover, once established, synovitis could be sustained by the further development of  
10 antibodies to the immune complexed IgG (rheumatoid factors), and to degraded components of cartilage and connective tissue. However, at least the early stages of rheumatoid arthritis may depend upon the continual loading of circulating monocytes with IgG immune  
15 complexes containing arthritogenic peptides.

The methods of the invention are designed to ameliorate or prevent the immune response to arthritogenic peptides described above. In the former approach, early stage RA  
20 patients or patients who have a high risk of developing RA are passively immunized with antibodies which will specifically bind arthritogenic peptides, preferably antibodies produced in mammalian milk. In the latter approach, a nonabsorbable antibiotic is administered to  
25 patients to reduce or eliminate the endogenous bacterial population in the gastrointestinal (GI) tract. This population is then replaced in the GI tract by bacteria which have been engineered to be incapable of expressing the RA susceptibility sequence. Both methods may be  
30 supplemented by an active immunization protocol wherein immunogenic arthritogenic peptides are administered as a vaccine to the patient, alone or in combination with immunostimulatory agents.

II. REAGENTS AND METHODS FOR USE IN IDENTIFYING SUITABLE CANDIDATES FOR THE THERAPEUTIC METHODS OF THE INVENTION

5 A. Characteristics of Suitable Candidates for the Therapeutic Methods of the Invention.

The principal candidates for the therapeutic methods of the invention are individuals who have early stage RA or  
10 who are predisposed to develop the disease. In this regard, with one caveat, an individual may be considered to be "predisposed" to develop RA when their HLA molecules contain the RA susceptibility sequence.

15 The caveat, however, is based on the observation that certain "normal" individuals (i.e., who do not have a family history of RA and do not develop it themselves) may nonetheless have endogenous HLA molecules which bear the RA susceptibility sequence. Yet despite the presence  
20 of the RA susceptibility sequence in these individuals, their cellular immune responses to dnaJ may be no different in absolute magnitude from the responses of individuals whose HLA molecules do not bear the RA susceptibility sequence.

25 It can be presumed from the preceding observation that the development of RA in persons whose HLA molecules bear the RA susceptibility sequence is the result not only of a cellular immune response, but also a humoral immune  
30 response. In other words, the development of RA is most likely associated not only with the education of the T cell repertoire to recognize the RA susceptibility sequence as non-self, but also to the production in RA sufferers of anti-RA susceptibility sequence antibodies  
35 (see, Example IV and FIGURE 3, showing inhibition of antibody binding in lymphocytes from RA patients by dnaJ, where the magnitude of the inhibition substantially

exceeds that observed in lymphocytes from normal individuals). Thus, individuals whose HLA antigens bear the RA susceptibility sequence and who produce anti-RA susceptibility sequence antibodies will, for purposes of this disclosure, be considered to be "predisposed" to RA. A screening method for identification of individuals with early stage RA or who are predisposed to it (the "RA screening method") is described below.

10 B. Steps of the RA Screening Method.

The RA screening method will generally comprise the steps of (1) detecting whether the RA susceptibility sequence is present on HLA molecules from an individual (in particular, DW4 molecules), and (2) detecting whether lymphocytes from the individual produce antibodies in response to being exposed to an immunogenic form of an arthritogenic protein or peptide. Alternatively, the screening method may entail only the latter step because if the individual's lymphocytes produce antibodies in response to being exposed to an RA susceptibility sequence protein, the individual may be presumed to be more likely to develop RA. For convenience, the HLA molecules which may bear the RA susceptibility sequence in a given individual will be collectively referred to hereafter as "HLA-DW4" molecules, although the term will be understood to encompass any HLA molecule which may bear the RA susceptibility sequence.

30 To perform the RA screening method, a biological sample, which may be any fluid or tissue likely to contain lymphocytes, but will preferably be whole peripheral blood or synovial fluid (the "lymphocyte sample"), will be obtained using conventional techniques from the individual to be screened for RA. To determine whether the individual's HLA molecules bear the RA susceptibility sequence, conventional HLA typing techniques well-known

to those skilled in the art may be employed. It will be appreciated in this regard that the nucleotide and amino acid sequences for most known HLA antigens have been fairly well characterized and can be readily identified  
5 (see, e.g., Marsh, et al., *Tissue Antigens*, 37:181-189 (1991), and Bodmer, et al., *Tissue Antigens*, 37:97-105 (1991)).

For example, with reference to the polynucleotide  
10 sequences reported by Marsh and Bodmer, et al., and/or the polynucleotide sequences contained in the Sequence Listing appended hereto, those of ordinary skill in the art will be able to construct oligonucleotide probes which will hybridize to target polynucleotide sequences  
15 for detection of specific HLA antigens in a lymphocyte sample. Techniques for construction of suitable probes and performance of hybridization techniques are described in greater detail *infra* and may be employed by those of ordinary skill in the art without undue experimentation.

20  
Commonly, however, HLA typing is performed serologically, i.e., by using standardized antisera (of defined specificity) to a lymphocyte sample together with complement and observing whether the test cells are  
25 killed. HLA typing may also be performed by other conventional immunological techniques such as the "Mixed Lymphocyte Reaction" wherein test lymphocytes are mixed with B lymphocytes of defined HLA specificity. In the Mixed Lymphocyte Reaction, test cells of specificity  
30 different than the B cells of known HLA type are stimulated and proliferate. Performance of all of these HLA typing techniques is well within the ordinary level of skill in the art.

35 The presence of the RA susceptibility sequence on the HLA molecules of an individual may also be inferred from binding of anti-dnaJ or anti-arthritisogenic peptide

antibodies by cells in the lymphocyte sample. Because class D HLA molecules are also present on macrophages, monocytes and some activated T cells, antibody binding on these cells may also occur at specific epitopes.

5

More specifically, the arthritogenic peptides may be detected in a lymphocyte sample using anti-arthritogenic peptide antibodies in either liquid or solid phase immunoassay formats (when bound to a carrier).

10 Antibodies for use in these formats may be produced as described *infra*.

Examples of well-known carriers for use in solid-phase assay formats include glass, polystyrene, polypropylene, 15 polyethylene, dextran, nylon, amylases, natural and modified celluloses, polyacrylamides, agaroses and magnetite. The nature of the carrier can be either soluble or insoluble for purposes of the invention.

20 Examples of types of immunoassays which can utilize anti-arthritogenic antibodies of the invention are competitive and non-competitive immunoassays in either a direct or indirect format. Examples of such immunoassays are the ELISA, the radioimmunoassay (RIA), and the sandwich 25 (immunometric) assay. Binding of arthritogenic peptides using the antibodies of the invention can be done utilizing immunoassays which are run in either the forward, reverse, or simultaneous modes, including immunohistochemical assays on physiological samples. 30 Those of skill in the art will know, or can readily discern other immunoassay formats without undue experimentation.

The protocol described in Example V illustrates how the 35 RA screening method may be performed by immunoassay (there, an enzyme-linked immunoabsorbent assay, or ELISA). In a preferred embodiment of the RA screening

method, lymphocytes obtained by conventional means from persons who are suspected of having early stage RA or of being predisposed to the disease are cultured and exposed to immunogenic RA susceptibility peptides, preferably  
5 rdnaJ (produced as described *infra*). The cellular immune response of the cultured lymphocytes to the immunogenic dnaJ is then detected. Alternatively, the protocol may be performed as an inhibition study as described in Example IV; i.e., where any reduction in antibody binding  
10 through preincubation with dnaJ peptide is detected.

The anti-arthritogenic peptide antibodies of the invention may also be detectably labelled. There are many different labels and methods of labeling known to those  
15 of ordinary skill in the art. Examples of the types of labels which can be used in the present invention include enzymes, radioisotopes, fluorescent compounds, colloidal metals, chemiluminescent compounds, and bio-luminescent compounds. Those of ordinary skill in the art will know  
20 of other suitable labels for binding to the anti-arthritogenic peptide antibodies of the invention, or will be able to ascertain such, using routine experimentation. Furthermore, the binding of these labels to the anti-arthritogenic peptide antibodies of  
25 the invention can be done using standard techniques common to those of ordinary skill in the art. Another labeling technique which may result in greater sensitivity consists of coupling the antibodies to low molecular weight haptens. These haptens can then be  
30 specifically detected by means of a second reaction. For example, it is common to use haptens for this purpose such as biotin, which reacts with avidin.

To differentiate between an individual whose HLA-DW4  
35 molecules bear the RA susceptibility sequence peptide but who is nonetheless not predisposed to RA from one who is genetically disposed to RA, the ability of the individual

to produce a humoral immune response to immunogenic dnaJ or RA susceptibility sequence peptide may also be tested. To that end, a lymphocyte sample is incubated with an immunogenic arthritogenic peptide. Any anti-arthritogenic peptide antibodies produced in the sample are then detected by an appropriate immunoassay format as described above or in Example V. For convenience of detection, the immunogenic arthritogenic protein or peptide may be detectably labelled as described above.

10

C. Reagents for Use in the Screening Methods.

Reagents for use in the RA screening method of the invention include arthritogenic peptides, preferably those produced synthetically or by recombinant means. Recombinant or synthetic dnaJ proteins and arthritogenic peptides will be particularly preferred reagents for use in the methods of the invention.

20 1. Methods for Production of Purified, Synthetic and Recombinant

Arthritogenic Peptides

The term "substantially pure" as used herein denotes a protein which is substantially free of other compounds with which it may normally be associated *in vivo*. In the context of the invention, the term refers to homogenous proteins or peptides containing the RA susceptibility sequence, which homogeneity is determined by reference to purity standards known to those of ordinary skill in the art (such as purity sufficient to allow the N-terminal amino acid sequence of the protein to be obtained).

35 Substantially pure arthritogenic proteins and peptides may be obtained from intact microorganisms (particularly bacteria), through microbial expression, by synthesis,



and/or by purification means known to those skilled in the art, such as affinity chromatography. Such techniques may be utilized to obtain immunogenic peptide fragments of dnaJ or other arthritogenic proteins.

5

The nucleotide and amino acid sequences of several bacterial dnaJ proteins are known. For example, the sequences for *E. coli* dnaJ are reported in Albani, et al., *J.Clin.Invest.*, 89:327-331 (1992) (see also, SEQ ID NO: 1 herein) and the sequences for *Lactococcus lactis* are reported in Van Asseldonk, et al., *J.Bact.*, 175:1637-1644 (1993). With reference to such sequences, dnaJ protein and peptides in particular can be synthesized by such commonly used methods as t-BOC or FMOC protection of alpha-amino groups. Both methods involve stepwise syntheses whereby a single amino acid is added at each step starting from the C terminus of the peptide (see, Coligan, et al., *Current Protocols in Immunology*, Wiley Interscience, 1991, Unit 9). Peptides of the invention can also be synthesized by various well known solid phase peptide synthesis methods, such as those described by Merrifield (*J. Am. Chem. Soc.*, 85:2149, 1962), and Stewart and Young (*Solid Phase Peptides Synthesis*, Freeman, San Francisco, 1969, pp 27-62), using a copoly (styrene-divinylbenzene) containing 0.1-1.0 mMol amines/g polymer. On completion of chemical synthesis, the peptides can be deprotected and cleaved from the polymer by treatment with liquid HF-10% anisole for about 1/4-1 hours at 0°C. After evaporation of the reagents, the peptides are extracted from the polymer with 1% acetic acid solution which is then lyophilized to yield the crude material. This can normally be purified by such techniques as gel filtration on a "SEPHADEX® G-15" or "SEPHAROSE®" affinity column using 5% acetic acid as a solvent. Lyophilization of appropriate fractions of the column will yield the homogeneous peptide or peptide derivatives, which can then be characterized by such

standard techniques as amino acid analysis, thin layer chromatography, high performance liquid chromatography, ultraviolet absorption spectroscopy, molar rotation, solubility, and sequenced by the solid phase Edman  
5 degradation.

The invention also provides polynucleotides which encode dnaJ as well as other arthritogenic peptides, and can be used to obtain recombinant, immunogenic forms of these  
10 proteins. As used herein, "polynucleotide" refers to a polymer of deoxyribonucleotides or ribonucleotides, in the form of a separate fragment or as a component of a larger construct. DNA encoding a peptide of the invention can be assembled from cDNA fragments or from  
15 oligonucleotides which provide a synthetic gene which is capable of being expressed in a recombinant transcriptional unit. Polynucleotide sequences of the invention include DNA, RNA and cDNA sequences. A polynucleotide sequence can be deduced from the genetic  
20 code, however, the degeneracy of the code must be taken into account. Polynucleotides of the invention include sequences which are degenerate as a result of the genetic code.

25 As described in further detail below, polynucleotide sequences encoding arthritogenic proteins can be expressed in either prokaryotes or eukaryotes. Hosts can include microbial yeast, insect and mammalian organisms. Methods of expressing DNA sequences having eukaryotic or  
30 viral sequences in prokaryotes are well known in the art. Biologically functional viral and plasmid DNA vectors capable of expression and replication in a host are known in the art. Such vectors (i.e., "recombinant expression vectors") are used to incorporate DNA sequences of the  
35 invention. An illustration of the use of an expression vector to express dnaJ is provided in Example I. These sequences may also be contained in "host cells", i.e.,

transformed cells such as CHO and COS cells for use in gene expression.

DNA encoding RA susceptibility sequence proteins is  
5 obtained from sources other than *E. coli*. bacteria by a)  
obtaining a cDNA library from the particular organism, b)  
conducting hybridization analysis with labelled DNA  
encoding *E. coli*. bacterial arthritogenic protein or  
10 fragments thereof (usually, greater than 100 bp) in order  
to detect clones in the cDNA library containing  
homologous sequences, and c) analyzing the clones by  
restriction enzyme analysis and nucleic acid sequencing  
to identify full-length clones. If full length clones  
15 are not present in the library, then appropriate  
fragments may be recovered from the various clones and  
ligated at restriction sites common to the clones to  
assemble a full-length clone.

In general, prokaryotes are used for cloning of DNA  
20 sequences in constructing dnaJ expressing recombinant  
expression vectors. For example, *E. coli* K12 strain 294  
(ATCC No. 31446) may be particularly useful. Prokaryotes  
also are used for expression. The aforementioned strain,  
as well as *E. coli* W3110 (ATTC No. 27325), bacilli such  
25 as *Bacillus subtilis*, and other enterobacteriaceae such  
as *Salmonella typhimurium* or *Serratia marcescans*, and  
various pseudomonas species may also be used for  
expression.

30 In general, plasmid vectors used to produce rdnaJ will  
contain promoters and control sequences which are derived  
from species compatible with the host cell. The vector  
ordinarily carries a replication site as well as marker  
sequences which are capable of providing phenotypic  
35 selection in transformed cells. For example, *E. coli* is  
typically transformed using pBR322, a plasmid derived  
from an *E. coli* species (Bolivar, et al., *Gene*, 2:95,

(1977)). pBR322 contains genes for ampicillin and tetracycline resistance and thus provides easy means for identifying transformed cells. The pBR322 plasmid, or other microbial plasmid must also contain or be modified  
5 to contain promoters and other control elements commonly used in recombinant DNA construction.

Promoters suitable for use with prokaryotic hosts illustratively include the  $\beta$ -lactamase and lactose  
10 promoter systems (Chang, et al., *Nature*, 275:615, 1978; and Goeddel, et al., *Nature*, 281:544, 1979), alkaline phosphatase, the tryptophan (trp) promoter system (Goeddel, *Nucleic Acids Res.*, 8:4057, 1980) and hybrid  
15 promoters such as the taq promoter (de Boer, et al., *Proc. Natl. Acad. Sci. USA*, 80:21-25, 1983). However, other functional bacterial promoters are suitable. Their nucleotide sequences are generally known in the art, thereby enabling a skilled worker to ligate them to DNA  
20 encoding an RA susceptibility sequence protein (Siebenlist, et al., *Cell*, 20:269, 1980) using linkers or adapters to supply any required restriction sites.

In addition to prokaryotes, eukaryotic microbes such as yeast cultures may also be used. *Saccharomyces*  
25 *cerevisiae*, or common baker's yeast is the most commonly used eukaryotic microorganism, although a number of other strains are commonly available.

Suitable promoting sequences for use with yeast hosts  
30 include the promoters for 3-phosphoglycerate kinase (Hitzeman, et al., *J. Biol. Chem.*, 255:2073, 1980) or other glycolytic enzymes (Hess, et al. *J. Adv. Enzyme Reg.* 7:149, 1968; and Holland, *Biochemistry*, 17:4900, 1978) such as enolase, glyceraldehyde-3-phosphate  
35 dehydrogenase, hexokinase, pyruvate decarboxylase, phosphofructokinase, glucose-6-phosphate isomerase, 3-

phosphoglycerate mutase, pyruvate kinase, triosephosphate isomerase, phosphoglucose isomerase, and glucokinase.

Other yeast promoters, which are inducible promoters  
5 having the additional advantage of transcription controlled by growth conditions, are the promoter regions for alcohol dehydrogenase 2, isocytochrome C, acid phosphatase, degradative enzymes associated with nitrogen metabolism, metallothionein, glyceraldehyde-3-phosphate  
10 dehydrogenase, and enzymes responsible for maltose and galactose utilization. Yeast enhancers also are advantageously used with yeast promoters.

"Control region" refers to specific sequences at the 5'  
15 and 3' ends of eukaryotic genes which may be involved in the control of either transcription or translation. Virtually all eukaryotic genes have an AT-rich region located approximately 25 to 30 bases upstream from the site where transcription is initiated. Another sequence  
20 found 70 to 80 bases upstream from the start of transcription of many genes is a CCAATX region where X may be any nucleotide. At the 3' end of most eukaryotic genes is an AATAAA sequence which may be the signal for addition of the poly A tail to the 3' end of the  
25 transcribed mRNA.

Preferred promoters controlling transcription from vectors in mammalian host cells may be obtained from various sources, for example, the genomes of viruses such  
30 as polyoma, Simian Virus 40 (SV40), adenovirus, retroviruses, hepatitis-B virus and most preferably cytomegalovirus, or from heterologous mammalian promoters, e.g. beta actin promoter. The early and later promoters of the SV40 virus are conveniently obtained as  
35 an SV40 restriction fragment which also contains the SV40 viral origin of replication (Fiers, *et al*, *Nature* 273:113, 1978). The immediate early promoter of the

human cytomegalovirus is conveniently obtained as a HindIII E restriction fragment (Greenaway, et al., *Gene* 18:355-360, 1982). Promoters from the host cell or related species also are useful herein.

5

Suitable host cells for transformation with and expression of the vectors of this invention encoding arthritogenic proteins in higher eukaryotes include: monkey kidney CV1 line transformed by SV40 (COS-7, ATCC  
10 #1651; human embryonic kidney line (293, Graham, et al., *J. Gen Virol.*, 36:59, 1977); baby hamster kidney cells (BHK, ATCC CCL 10); chinese hamster ovary-cells-DHFR (DHO, et al., *Proc. Nat'l Sci. Acad. USA*, 77:4216, 1980);  
15 23:243-251, 1980); mouse sertoli cells (TM4, Mather, J.P., *Biol. Reprod.*,  
african green monkey kidney cells (VERO-76, ATCC CRL-1587); human cervical carcinoma cells (HELA, ATCC #2); canine kidney cells (MDCK, ATCC #34); buffalo rat liver cells (BRL 3A, ATCC #1442); human lung cells (WI38, ATCC  
20 #75); human liver cells (Hep G2, HB 8065); mouse mammary tumor (MMT 060562, ATCC #51); and TRI cells (Mather, et al., *Annals N.Y. Acad. Sci.*, 383:44-68, 1982).

"Transformation" means introducing DNA into an organism  
25 so that the DNA is replicable, either as an extrachromosomal element or by chromosomal integration, such as described in Graham, et al., (*Virology*, 52:456-457, 1973). However, other methods for introducing DNA into cells such as by nuclear injection or by protoplast  
30 fusion may also be used. If prokaryotic cells or cells which contain substantial cell wall constructions are used, transfection may be achieved by means well known in the art such as calcium treatment using calcium chloride as described by Cohen, F.N., et al., (*Proc. Nat'l Acad. Sci. USA*, 69:2110, 1972).  
35

"Transfection" refers to the taking up of an expression vector by a host cell whether or not any coding sequences are in fact expressed. Numerous methods of transfection are known to the ordinarily skilled artisan using, for example,  $\text{CaPO}_4$  or electroporation. Successful transfection is generally recognized when any indication of the operation of the transfected vector occurs within the host cell.

Construction of suitable vectors containing the desired coding and control sequences employ standard ligation techniques. Isolated plasmids or DNA fragments are cleaved, tailored, and relegated using standard techniques in the form desired to form the plasmids required.

Host cells may be transformed with the expression vectors of this invention and cultured in conventional nutrient media modified as is appropriate for inducing promoters, selecting transformants or amplifying genes. The culture conditions, such as temperature, pH and the like, are those previously used with the host cell selected for expression, and will be apparent to the ordinarily skilled artisan.

Also of use in the invention are polynucleotides which may not encode dnaJ protein but which nonetheless is capable of hybridizing with DNA encoding an arthritogenic protein (particularly at the RA susceptibility sequence) (e.g., "primers" or "probes"). The probes and primers of the invention will generally be oligonucleotides. "Oligonucleotides" refers to either a single stranded polydeoxynucleotide or two complementary polydeoxynucleotide strands which may be chemically synthesized. Such synthetic oligonucleotides have no 5' phosphate and thus will not ligate to another oligonucleotide without adding a phosphate with an ATP in the presence of a kinase. A

synthetic oligonucleotide will ligate to a fragment that has not been dephosphorylated. Such oligonucleotides may be detectably labelled with a detectable substance such as a fluorescent group, a radioactive atom or a  
5 chemiluminescent group by known methods and used in conventional hybridization assays.

The above-described hybridization technique may be adapted to detect whether the RA susceptibility sequence  
10 is present in an individual's HLA molecules. Such assays may be employed in identifying the RA susceptibility sequence in an analyte sample (e.g., of HLA molecules), or for *in vitro* diagnosis such as detection of DNA or mRNA for the RA susceptibility sequence.

15

Compositions comprising arthritogenic proteins may include such substances as the stabilizers and excipients described below, predetermined amounts of proteins from the cell or organism that served as the source of DNA  
20 encoding the growth hormone receptor and binding protein, proteins from other than arthritogenic protein source organisms, and synthetic polypeptides such as poly-L-lysine. Recombinant arthritogenic proteins and peptides which are expressed in allogeneic hosts will of course be  
25 expressed completely free of gene source proteins. For example, expression of human polynucleotides in Chinese Hamster Ovary (CHO) cells or other nonhuman higher mammalian cells results in a composition where the protein is not only free of contaminating agents and  
30 human proteins.



2. Anti-arthritogenic Protein and Anti-RA Susceptibility Sequence Antibodies.

Antibodies for use in this method of the invention may be  
5 raised against intact arthritogenic proteins, as well as  
synthetic or recombinant peptides. Such peptides will  
include and preferably consist of the RA susceptibility  
sequence (hereafter, the "antibodies of the invention").  
For example, suitable immunogenic, arthritogenic peptides  
10 for use in the method of the invention are described in  
the Sequence Listing appended hereto as SEQ ID NOs: 4 and  
5. The amino acids following the RA susceptibility  
sequence in SEQ ID NOs: 4 and 5 are likely not required  
for T-cell activation by the RA susceptibility sequence,  
15 but do cause the peptide to be highly charged and,  
therefore, immunogenic. To that end, preferred  
immunogenic, arthritogenic peptides for use in producing  
the antibodies of the invention will be at least about 7-  
15 amino acids in total length.

20

Preferably, the antibodies will be raised against  
recombinant arthritogenic peptides to ensure that the  
antisera are specific for the RA susceptibility sequence  
and to enable production of immunogenic peptides on a  
25 relatively large scale. Most preferably, the antibodies  
of the invention will be raised in milk, such as bovine  
milk, to selectively stimulate production of IgG (thus  
enhancing the specificity of the antisera for  
arthritogenic peptides rather than other GI bacterial  
30 antigens).

The antibodies of the invention will also be useful to  
detect the presence of the RA susceptibility sequence on  
HLA molecules, in populations of *E. coli*. from the GI  
35 tract of an individual, and in certain therapeutic  
modalities described *infra*.

To induce an immune response to dnaJ or another arthritogenic protein or peptide in a normal animal, the immunogenicity of the protein or peptide may be enhanced by coupling to a carrier protein by conjugation using  
5 techniques which are well-known in the art. Such commonly used materials which are chemically coupled to the molecule to enhance their immunogenicity include keyhole limpet hemocyanin (KLH), thyroglobulin, bovine serum albumin (BSA), and tetanus toxoid. The coupled  
10 molecule is then used to immunize the animal (e.g., a mouse, rabbit or cow).

A multiple injection immunization protocol is preferred for use in immunizing animals with immunogenic protein  
15 (see, e.g., Langone, et al., eds., "Production of Antisera with Small Doses of Immunogen: Multiple Intradermal Injections", *Methods of Enzymology*, Acad. Press, 1981). For example, an antibody response can be obtained in rabbits by intradermal injection of 1 mg of  
20 immunogenic protein emulsified in Complete Freund's Adjuvant followed several weeks later by one or more boosts of the same antigen in incomplete Freund's Adjuvant. A particularly preferred method for production of therapeutic antibodies of the invention in cows is  
25 described further *infra*.

Polyclonal antibodies produced by the immunized animals can be further purified, for example, by binding to and elution from a matrix on which the protein or peptide to  
30 which the antibodies were raised is bound. Those of skill in the art will know of various techniques common in the immunology arts for purification and/or concentration of polyclonal antibodies, as well as monoclonal antibodies (see, for example, Coligan, et al.,  
35 *Current Protocols in Immunology*, Unit 9, (Wiley Interscience, 1991)).

For preparation of monoclonal antibodies, immunization of a mouse or rat is preferred. The term "antibody" as used in this invention is meant also to include intact molecules as well as fragments thereof, such as for  
5 example, Fab and  $F(ab')_2$ , which are capable of binding an arthritogenic protein or peptide. Also, in this context, the term "mAb's of the invention" refers to monoclonal antibodies with specificity for an arthritogenic protein or peptide.

10

The general method used for production of hybridomas secreting monoclonal antibodies ("mAb's") is well known (Kohler and Milstein, *Nature*, 256:495, 1975). Briefly, as described by Kohler and Milstein, the technique  
15 comprised isolation of lymphocytes from regional draining lymph nodes of five separate cancer patients with either melanoma, teratocarcinoma or cancer of the cervix, glioma or lung. The lymphocytes were obtained from surgical specimens, pooled, and then fused with SHFP-1.  
20 Hybridomas were screened for production of antibody which bound to cancer cell lines. An equivalent technique can be used to produce and identify mAb's with specificity for an arthritogenic protein.

25 Confirmation of arthritogenic protein specificity among mAbs of the invention can be accomplished using relatively routine screening techniques (such as the enzyme-linked immunosorbent assay, or "ELISA") to determine the elementary reaction pattern of the mAb of  
30 interest.

It is also possible to evaluate an mAb to determine whether it has the same specificity as mAb of the invention without undue experimentation by determining  
35 whether the mAb being tested prevents a mAb of the invention from binding to an RA arthritogenic protein. If the mAb being tested competes with the mAb of the

invention, as shown by a decrease in binding by the mAb of the invention, then it is likely that the two monoclonal antibodies bind to the same or a closely related epitope.

5

Still another way to determine whether a mAb has the specificity of a mAb of the invention is to pre-incubate the mAb of the invention with an antigen with which it is normally reactive, and determine if the mAb being tested  
10 is inhibited in its ability to bind the antigen. If the mAb being tested is inhibited then, in all likelihood, it binds the same epitope as a mAb of the invention.

## 15 III. THERAPEUTIC METHODS OF THE INVENTION

## A. Passive Antibody Therapy.

As noted elsewhere above, it is believed that at least  
20 the early stages of RA depend on continual loading of circulating monocytes with IgG immune complexes containing arthritogenic proteins and peptides such as dnaJ. This "loading" is enabled at least in part by the failure of the GI immune system to produce sufficient  
25 antibodies, particularly IgA, to prevent escape of arthritogenic protein, peptides, and/or related antigens into circulation.

One therapeutic method of the invention is therefore  
30 directed to introducing antibodies into an individual with early stage RA or who is predisposed to the disease. These antibodies may be produced as described *supra* and will, in that case, preferably be monoclonal antibodies and will be administered enterally, preferably in enteric  
35 coated tablet form. Alternately, the antibodies will be produced in milk as described below.

The antibodies used will be specific for dnaJ protein or another arthritogenic protein (hereafter, "therapeutic antibodies"). The antibodies may be raised by immunization of an animal with these antigens in native, 5 synthetic or recombinant form. The antigens used may be derived from any organism which expresses the RA susceptibility sequence, but will preferably be raised against microorganisms which reside in the gut and express the peptide as part of a heat shock protein. 10 Most preferably, the antigens will be derived from *E. coli*. (due to the prevalence of this species in the human GI tract), but may also be raised against a cocktail of antigens from different microbial species to ensure that the antibodies will be specific for arthritogenic 15 proteins and peptides from a broad spectrum of organisms.

To develop antibodies in milk (which may then be administered therapeutically as "immune milk"), lactating mammals, preferably cows, are immunized with 20 immunogenic RA susceptibility sequence peptide as generally described *supra*. Cow's milk is the preferred medium for production of anti-RA susceptibility sequence peptide antibodies due to its absorbability into the human GI tract. The milk may be collected, pasteurized 25 and, preferably, lyophilized for storage by conventional techniques and used as a dry milk powder. The immune milk powder may be administered in powder or reconstituted form by enteral routes generally as described in U.S. Patent No. 4,732,737, the disclosure of 30 which (from column 8, line 5 through column 14, line 11) is incorporated herein by reference.

#### B. Antibiotic Elimination and Repopulation of Gut Bacteria

35

Although proteins do not normally efficiently cross the intestinal barrier in humans, it appears based on the

observations discussed elsewhere above that arthritogenic antigens (e.g., dnaJ) do come into contact with the systemic immune system of persons with RA. This embodiment of the invention is therefore directed toward  
5 preventing or minimizing contact between the systemic immune system and arthritogenic antigens by eliminating the source of the latter. More specifically, according to this method of the invention, GI tract bacteria which may express the RA susceptibility sequence as part of a  
10 heat shock protein are replaced with otherwise identical bacteria which are incapable of expressing the RA susceptibility sequence (i.e., "RA benign bacteria", which may either contain an "RA benign susceptibility sequence", or may be free of the RA susceptibility  
15 sequence).

Conveniently, the RA benign bacteria will be generated by site-specific mutagenesis of the RA susceptibility sequence. Comparisons of the amino acid sequence in dnaJ  
20 proteins from various microbial species strongly suggest that the RA susceptibility sequence is not essential to the biological activity of the protein (see, e.g., Silver, et al., Cell, 74: 5-6 (1993)). Thus, modification of the RA susceptibility sequence in a  
25 microorganism to render the expression product benign should not impair the ability of the organism to survive in the human GI tract.

However, a modification of the RA susceptibility sequence  
30 from QKRRAA to DERRRAA substantially reduces the ability of the modified arthritogenic protein to stimulate lymphocytes from individuals with early stage RA (see, Example III and FIGURE 2). Thus, the modification of the RA susceptibility sequence from QK/RRAA to DERRAA or an  
35 equivalent variant will be a preferred modification which will generate the RA benign bacteria of the invention.

Other minor modifications of the primary amino acid sequence of dnaJ, or of other arthritogenic proteins, may result in variants which are RA benign but have otherwise substantially equivalent activity to the wild-type protein. All of the variants produced by these  
5 modifications are included herein as long as the resulting, modified microorganism is RA benign and the biological activity present in the original protein otherwise still exists.

10

Amino acid sequence variants fall into one or more of three classes; substitutional, insertional or deletional variants. The variants ordinarily are prepared by site specific mutagenesis of nucleotides in the DNA encoding  
15 the wild-type protein, thereby producing DNA encoding the variant, and thereafter expressing the DNA in recombinant cell culture. However, peptides having up to about 100-150 residues may be conveniently prepared by *in vitro* synthesis.

20

While the site for introducing an amino acid sequence variation is predetermined, the mutation per se need not be predetermined. For example, in order to optimize the performance of a mutation at a given site, random  
25 mutagenesis may be directed at the target codon or region and the expressed RA benign susceptibility sequence peptides variants screened for the optimal combination of desired activity. Techniques for making substitution mutations at predetermined sites in DNA having a known  
30 sequence are well known, for example M13 primer mutagenesis. Amino acid substitutions are typically of single residues; insertions usually will be on the order of about from 1 to 10 amino acid residues; and deletions will range about from 1 to 30 residues. Deletions or  
35 insertions preferably are made in adjacent pairs, i.e., a deletion of 2 residues or insertion of 2 residues.

In addition to rendering the RA susceptibility sequence RA benign, modifications may be made to increase or decrease the stability of the protein, to impair its expression (by, for example, disabling a promoter which  
5 would normally dictate expression of the RA susceptibility sequence), or to accomplish other desirable modifications in the protein, which modifications will be apparent to those of ordinary skill in the art. For example, deletion or substitution of potential  
10 proteolysis sites can also be accomplished by deleting such residues or substituting a glutamyl or histidyl residue. Such modifications to intact bacteria may be accomplished by conventional recombinant DNA technology, including the techniques described in Section II, C,  
15 *supra*.

Most preferably, the RA benign bacteria of the invention will be resistant to antibiotics. To this end, a polynucleotide conferring such antibiotic resistance will  
20 be included in the genome of the RA benign bacteria, such as the genes which confer ampicillin and tetracycline resistance which are well-known in the art (see, e.g., Bolivar, et al., *Gene*, 2:95 (1977)). Most preferably, the RA benign bacteria of the invention will also be  
25 rendered substantially free of lipopolysaccharide ("LPS") by means well-known in the art (see, e.g., *J.Immun.Methods*, 132: 191-195, 1990).

The RA benign bacteria of the invention will be used to  
30 repopulate a human GI tract in which the endogenous bacterial population (predominantly *E. coli*.) has been depleted. This depletion may be accomplished by intensive antibiotic therapy accomplished with methods and reagents well-known to those skilled in the clinical  
35 arts. A particularly efficacious therapeutic regime for use in this regard would involve administering a nonabsorbable antibiotic preferably a broad spectrum



antibiotic, (such as neomycin or kanamycin) in therapeutically effective dosages by enteral routes to an individual with early stage RA or who is predisposed to the disease for a period of one to eight weeks or longer.

5 In this context, a "therapeutically effective dosage" of antibiotic will be one which is sufficient to substantially eliminate the endogenous bacterial population from the GI tract of the patient. Such dosages will vary depending on the antibiotic

10 administered; suitable dosages will be known to physicians of ordinary skill in the art. The extent to which RA benign bacteria will be administered will depend on the age, weight and condition of the patient as well as the extent to which the endogenous bacterial

15 population they will replace is depleted. However, a therapeutically effective dosage of RA benign bacteria will generally be  $10^6$  to  $10^8$  bacteria/dose.

To minimize adverse reactions in the patient from

20 depletion of the endogenous bacterial population of the patient's GI tract during the course of the antibiotic therapy, the antibiotics may be administered under substantially sterile conditions in a hospital setting or with appropriate limitations on the patient's activities

25 and diet. Alternatively or concurrently, a more practical therapeutic approach would introduce antibiotic-resistant RA benign bacteria to the patient's GI tract during the course of the antibiotic therapy to replace the antibiotic depleted population of wild-type

30 bacteria.

#### C. Active Immunization with an RA Susceptibility Sequence Protein

The above-described methods of the invention may be

35 supplemented with an active immunization protocol whereby the patient is immunized with an immunogenic RA susceptibility sequence protein or peptide. Further, to ensure

purity and reproducibility of the immunizing peptide, it will preferably be produced and used in recombinant form.

Recombinant arthritogenic proteins may be produced as  
5 described elsewhere above and as illustrated in Example  
I, *infra*. Immunogenic forms of these proteins and  
conjugates thereof may be produced as described above and  
used as a vaccine ("RA vaccine") generally as described  
with respect to synthetic RA susceptibility sequence  
10 vaccines in PCT Published Patent Application No. WO  
9014835, "Method to Treat Rheumatoid Arthritis", Carson,  
*et al.*, inventors (filed 5/31/90), the disclosure of  
which is incorporated herein by this reference solely as  
an illustration of a suitable immunization protocol for  
15 use in the invention.

More specifically, the immunogenic peptides of the  
invention will preferably be administered as an RA  
vaccine in a manner sufficient to selectively stimulate  
20 IgA production in the patient's GI tract. Therefore, the  
immunogenic peptides of the invention will preferably be  
administered concomitantly with an immunostimulant which  
is known in the art to induce IgM switching to IgA; e.g.,  
TGF- $\beta$ , which may also inhibit systemic helper T cell  
25 activity. Most preferably, the immunogenic peptide/IgA  
immunostimulant of the invention will be administered  
externally to localize the effect of the vaccine in the  
GI tract.

30 Depending on the patient's presenting condition, it may  
also be desirable to administer immunostimulants and/or  
immunosuppressants whose action will be directed to the  
patient's systemic immune system. Suitable substances  
having this activity are well-known in the art and  
35 include interleukin-6 (for stimulation of  
suppressor/cytotoxic T cells) as well as cyclosporin A  
and anti-CD4 antibodies (for immune suppression). These

substances may be administered according to the judgment of a skilled clinician to preferentially expand the suppressor/cytotoxic T lymphocyte population of a patient whose systemic immune system is suspected of being, or  
5 known to have been, exposed to an arthritogenic antigen.

The RA vaccines of the invention may be prepared for administration by mixing the active components of the vaccine with physiologically acceptable carriers. Such  
10 carriers will be nontoxic to recipients at the dosages and concentrations employed. Ordinarily, the preparation of such compositions entails combining the particular protein with buffers, antioxidants such as ascorbic acid, low molecular weight (less than about 10 residues)  
15 polypeptides, proteins, amino acids, carbohydrates including glucose or dextrans, chelating agents such as EDTA, glutathione and other stabilizers and excipients. Such compositions may be in suspension, emulsion or lyophilized form and will be pharmaceutically acceptable;  
20 i.e., suitably prepared and approved for use in the desired application.

With respect to compositions containing TGF- $\beta$ , molecules of the TGF- $\beta$  family are ordinarily produced in the form  
25 of inert precursors that are activated by exposure to acid or proteases. Those of ordinary skill in the art will, therefore, be able to select carriers and/or excipients for use in the RA vaccine compositions of the invention which will neither interfere with the *in vivo*  
30 activation of the TGF- $\beta$  component or activate the component prematurely (i.e., prior to administration of the composition).

The protocol for administration of the RA vaccines of the  
35 invention will vary with their composition as well as the age, weight and condition of the patient. However, a preferred protocol for administration of the RA vaccines

will involve daily oral (enteral) administration of immunologically effective dosages of the vaccine, with or without other forms of therapy, such as the methods described above and conventional anti-inflammatory treatments (e.g., use of steroidal or nonsteroidal anti-inflammatory medicaments and/or analgesics).

Depending on the frequency of dosage, an immunologically effective dosage will range from 100  $\mu$ g-100 mg (preferably 1-100 mg) immunogenic protein or peptide. Daily dosages of immunogenic peptide will most preferably be given in amounts of about 1mg/day. Conventional dosages of any immunostimulant/immuno-suppressant component in the RA vaccine will be used (e.g., 1-100  $\mu$ g/kg interleukin-6). Such dosages will be known to, or may be readily ascertained by, those of ordinary skill in the art. Treatment in early stage RA patients may be continued through to or beyond observation of the surrogate end-point for RA described further below.

20

Vaccination of patients who are predisposed to RA, but have not developed the disease, may be accomplished by short-term administration of one or more dosages of the RA vaccines of the invention sufficient to produce detectable increases in anti-immunogenic peptide IgA in fluids of the patient's GI tract. Generally, however, the preferred use of the RA vaccines of the invention will be in patients with early stage RA.

30 D. Indicia of Therapeutic Efficacy for the Methods of the Invention.

Generally, the efficacy of the therapeutic methods of the invention over time may be judged by an absence of clinical signs of RA in patients who are predisposed to the disease (but have not developed it). In patients who have been diagnosed as having RA, the efficacy of the

methods of the invention will be measured by a lessening in the severity of a patient's symptoms or by the occurrence of a surrogate end-point for the disease.

5 Conventional parameters for clinical symptoms of RA and surrogate end-points for the disease are well-known to those of ordinary skill in the art, including "Ritchie Index" measurements for joint tenderness (Ritchie, et al., *Q.J. Med.*, 37: 393-406 (1968)), the number of swollen  
10 joints, daily duration of morning joint stiffness, grip strength, intensity of pain on a visual analogue scale (Huskisson, *Lancet*, 2:1127-1131 (1974)), and relative levels of use of anti-inflammatory agents and/or analgesics by the patient.

15

Based on the results of double-blind clinical trials of an *E. coli.* extract, Brackertz, et al., *J. Rheum.* (16:19-23 (1989)) one of ordinary skill in the art would expect clinical tolerance of the RA vaccine and antibody  
20 compositions of the invention to be good. The severity of the most possible side effects (such as gastrointestinal irritation) would be expected to be low. Toxicity of these compositions may be monitored by conventional means, such as periodic laboratory  
25 evaluations through assays of such variables as hematocrit, hemoglobin, thrombocyte and rheumatoid factor levels as well as blood chemistry.

The invention having been fully described, it is  
30 illustrated by examples below. The examples will, however, be understood as exemplifying rather than limiting the scope of the invention.

EXAMPLE ICLONING, EXPRESSION AND PURIFICATION OF *E. Coli*

5 A 1.1-kb DNA fragment containing the *E. coli* dnaJ gene  
(see, SEQ ID NO: 1) was amplified by polymerase chain  
reaction from a recombinant phage encompassing the dnaK  
and dnaJ genes of *E. coli*. The polymerase chain reaction  
product was subcloned in the Xba 1 site of the vector  
10 PCG808fX (New England Biolabs, Beverly, MA) and expressed  
as a maltose binding fusion protein that was purified by  
filtration on any amylose column and elution in an  
amylose buffer. A rabbit antiserum to the fusion protein  
was used to purify rdnaJ expressed by cloning in the Xba  
15 1 site of a pUC 19 vector. To this end, rabbit IgG were  
purified on immobilized protein A (Pierce Chemical Co.,  
Rockford, IL) and coupled to an agarose support matrix  
(AFFI-GEL Hz, a trademarked product of Bio-Rad  
Laboratories, Richmond, CA). rdnaJ was then obtained by  
20 running the raw cellular extracts through the affinity  
column and eluting the bound protein in glycine buffer,  
pH 2.5. Polyacrylamide gel electrophoresis of the  
purified product showed one unique band with the expected  
molecular mass of 41 kD.

25

EXAMPLE IIRESPONSE OF LYMPHOCYTES FROM PATIENTS WITH  
EARLY STAGE RA TO rdnaJ

Lymphocytes from patients with early untreated rheumatoid  
30 arthritis (RA) were obtained from blood (peripheral blood  
lymphocytes, or "PBL's") for from synovial fluids using  
standard aseptic techniques. The cells were incubated  
for 7 days with purified recombinant *E. coli* dnaJ (10  
 $\mu$ g/ml, obtained as described in Example I) in RPMI 1640  
35 medium supplemented with 10% prescreened human AB type  
serum. Lymphocytes from 10 control subjects (i.e.,  
persons

without RA) were treated similarly. Proliferation during the last 16 hours of culture was expressed as a stimulation index =  $\frac{\text{cpm in cultures with dnaJ}}{\text{cpm in cultures without dnaJ}}$ .

5  
Based on cellular proliferation responses of PBL's from 14 early stage RA patients, and of synovial fluid lymphocytes from 8 early stage RA, the proliferation responses of the PBL's was approximately 3.6 times  
10 greater than the response of control subject lymphocytes while the response of synovial fluid lymphocytes was approximately 2.3 times greater than the response of control subject lymphocytes (see, FIGURE 1).

15  
EXAMPLE III  
RESPONSE OF LYMPHOCYTES FROM PATIENTS WITH  
EARLY STAGE RA TO RA SUSCEPTIBILITY  
SEQUENCE PEPTIDES

20 Lymphocytes from patients with early stage RA were contacted with one of two RA susceptibility sequence peptides according to the protocol described in Example II. The peptides used were either a 15 amino acid synthetic peptide having the wild-type sequence  
25 QKRAAYDQYGHAAFE or a 15 amino acid synthetic mutant peptide having the sequence DERAAYDQYGHAAFE.

As shown in FIGURE 2, gauging the results according to the same standard of measurement used for Example II, the  
30 responses of PBL's to the wild-type peptide were more than 5 times greater than the responses of PBL's to the mutant peptide and approximately 9 times greater than the response of lymphocytes from control subjects to the wild-type peptide.

35

EXAMPLE IVINHIBITION OF ANTIBODY BINDING TO dnaJ

Microtiter plates were coated with recombinant dnaJ  
5 (10 $\mu$ g/ml). Either sera obtained from patients with early  
stage RA or sera from control subjects were diluted 1:100  
in borate buffered saline. Half of each specimen was  
incubated overnight at 4°C with the wild-type dnaJ  
peptide described in Example III. Then the paired serum  
10 specimens were added to the dnaJ coated plates.

After 4 hours incubation, antibody binding was detected  
with alkaline phosphatase labelled goat anti-human IgG;  
levels of detected antibody binding were determined  
15 according to the following formula:

$$\% \text{ inhibition} = 100 \frac{(1 - \text{OD}_{460} \text{ with wild-type peptide})}{(\text{OD}_{460} \text{ without wild-type peptide})}$$

20 As shown in FIGURE 3, antibody binding to rdnaJ was  
inhibited to, by the wild-type RA susceptibility sequence  
peptide, approximately a 3 times greater extent in the RA  
sera than the inhibition detected in the control sera.

25



EXAMPLE V  
DETERMINATION OF GENETIC PREDISPOSITION  
TO RA BY IMMUNOASSAY

5 Antibody responses to rdnaJ were measured by ELISA.  
100 $\mu$ l aliquots of rdnaJ (10  $\mu$ g/ml) or membrane proteins  
from HLA DR or DR41 homozygous cells (100  $\mu$ g/ml) were  
used to coat ELISA plates at 4°C overnight. Then  
different dilutions of rabbit sera were added for a 2  
10 hour incubation at room temperature. After washing with  
BBS/0.2% Tween-20, bound antibody was detected by using  
alkaline phosphatase-conjugated goat anti-rabbit IgG  
(Boehringer-Mannheim Biochemicals) diluted 1:1000. The  
results are expressed in FIGURE 4 as the mean OD at 405  
15 nm of duplicate wells.

## SUMMARY OF SEQUENCES

SEQ ID NO:1 is the open reading frame of the polynucleotide encoding *E. coli* K12 dnaJ.

5

SEQ ID NO:2 is the amino acid sequence of a RA susceptibility sequence variant.

10 SEQ ID NO:3 is the amino acid sequence of a RA susceptibility sequence variant.

SEQ ID NO:4 is the amino acid sequence for an immunogenic dnaJ peptide.

15 SEQ ID NO:5 is the amino acid sequence for an immunogenic dnaJ peptide.

## SEQUENCE LISTING

- (1) GENERAL INFORMATION:
- 5 (i) APPLICANT: THE REGENTS OF THE UNIVERSITY  
OF CALIFORNIA
- 10 (ii) TITLE OF INVENTION: METHOD AND REAGENTS FOR THE TREATMENT OF  
RHEUMATOID ARTHRITIS
- (iii) NUMBER OF SEQUENCES: 5
- 15 (iv) CORRESPONDENCE ADDRESS:  
(A) ADDRESSEE: ROBBINS, BERLINER & CARSON  
(B) STREET: 201 N. FIGUEROA STREET, 5TH FLOOR  
(C) CITY: LOS ANGELES  
(D) STATE: CALIFORNIA  
20 (E) COUNTRY: US  
(F) ZIP: 90012
- (v) COMPUTER READABLE FORM:  
(A) MEDIUM TYPE: Floppy disk  
25 (B) COMPUTER: IBM PC compatible  
(C) OPERATING SYSTEM: PC-DOS/MS-DOS  
(D) SOFTWARE: PatentIn Release #1.0, Version #1.25
- (vi) CURRENT APPLICATION DATA:  
30 (A) APPLICATION NUMBER:  
(B) FILING DATE:  
(C) CLASSIFICATION:
- (viii) ATTORNEY/AGENT INFORMATION:  
35 (A) NAME: BERLINER, ROBERT  
(B) REGISTRATION NUMBER: 20,121  
(C) REFERENCE/DOCKET NUMBER: 5555-314
- (ix) TELECOMMUNICATION INFORMATION:  
40 (A) TELEPHONE: 213-977-1001  
(B) TELEFAX: 213-977-1003
- (2) INFORMATION FOR SEQ ID NO:1:
- 45 (i) SEQUENCE CHARACTERISTICS:  
(A) LENGTH: 1055 base pairs  
(B) TYPE: nucleic acid  
(C) STRANDEDNESS: single  
50 (D) TOPOLOGY: linear
- (ii) MOLECULE TYPE: DNA (clonal)
- (vii) IMMEDIATE SOURCE:  
55 (B) CLONE: E. coli K12 dnaJ polynucleotide (cDNA)
- (ix) FEATURE:  
(A) NAME/KEY: CDS  
60 (B) LOCATION: 1..1054
- (xi) SEQUENCE DESCRIPTION: SEQ ID NO:1:
- |    |                                                                   |     |
|----|-------------------------------------------------------------------|-----|
| 65 | ATGGCTAAGC AAGATTATTA CGAGATTTTA GCGTTTTCCA AAACAGCGGA AGAGCGTGAA | 60  |
|    | ATCAGAAAGG CCTACAAACG CCTGGCCATG AAATACCACC CGGACCGTAA CCAGGGTGAC | 120 |
|    | AAAGAGGCCT ATGGTCATGC TCGTTTTGAG CAAGGTGGCA TGGGCGGCGG CCGTTTTGGC | 180 |
| 70 | GGCGGCGCAG ACTTCAGCGA TATTTTTGGT GACGTTTTCG GCGATATTTT TGGCGGCGGA | 240 |
|    | CGTGGTCGTC AACGTGCGGC GCGCGGTGCT GATTTACGCT ATAACATGGA GCTCACCCTC | 300 |
|    | GAAGAAGCTG TACGTGGCGT GACCAAAGAG ATCCGCATTC CGACTCTGGA AGAGTGTGAC | 360 |

GTTTGCCACG GTAGCGGTGC AAAACCAGCT ACACAGCCGC AGACTTGTC GACCTGTCAT 420  
 GGTTCGTGC AGGTGCAGAG GCGCCAGGA TTCTTCCTG RACAGCAGAC CTGTCAACAC 480  
 5 TGTCAGGGCC GCGGTACGCT GATCAAAGAT CCGTGAACA AATGTCATGG TCATGGTCGT 540  
 CTTGAGCGCA GCAAACGCT TCCGTAAAA TCCGGCAGG GGTGGACCT GGACACCGCA 600  
 10 TCCGTCTTG GGGCGAAGT GAAGCGGCG AGCATGGCG ACCGGCAGG GATCTGTACG 660  
 TTCAGGTCA GGTAAACAG CACCCGATTT TCGAGCGTA AGGCAACAAC CTGTATTGCG 720  
 AAGTCCCGAT CAACTTCGCT ATGGCGGCG TGGGTGGCG AATCGAAGTA CCGACCCTTG 780  
 15 ATGGTCGCGT CAAACTGAAA GTGCTGGCG AAACCCAGAC CGGTAAGCTA TTCGTATGC 840  
 GCGGTAAGG CGTCAAGTCT GTCCGCGTG GCGCACAGG TGATTTGCTG TGCCGCGTTG 900  
 TCGTCGAAAC ACCGGTAGGC CTGAACGAAA GGCAGAAACA GCTGCTGCAA GAGGTGCAAG 960  
 20 AAAGATTCG TGGCCCAACC GCGAGCACA ACAGCCCGC CTCAAAGAGC TTCTTTGATG 1020  
 GTGTGAAGAA GTTTTTGAC GACCTGACCC GCTAA 1055

25 (2) INFORMATION FOR SEQ ID NO:2:  
 (i) SEQUENCE CHARACTERISTICS:  
 (A) LENGTH: 5 amino acids  
 (B) TYPE: amino acid  
 30 (C) STRANDEDNESS: single  
 (D) TOPOLOGY: linear  
 (ii) MOLECULE TYPE: peptide  
 35 (vii) IMMEDIATE SOURCE:  
 (B) CLONE: RA Susceptibility Sequence Variant  
 (ix) FEATURE:  
 40 (A) NAME/KEY: Peptide  
 (B) LOCATION: 1..5  
 (xi) SEQUENCE DESCRIPTION: SEQ ID NO:2:  
 45 Gln Lys Arg Arg Ala  
 1 5

50 (2) INFORMATION FOR SEQ ID NO:3:  
 (i) SEQUENCE CHARACTERISTICS:  
 (A) LENGTH: 5 amino acids  
 (B) TYPE: amino acid  
 55 (C) STRANDEDNESS: single  
 (D) TOPOLOGY: linear  
 (ii) MOLECULE TYPE: peptide  
 60 (vii) IMMEDIATE SOURCE:  
 (B) CLONE: RA Susceptibility Sequence Variant  
 (ix) FEATURE:  
 65 (A) NAME/KEY: Peptide  
 (B) LOCATION: 1..5  
 (xi) SEQUENCE DESCRIPTION: SEQ ID NO:3:  
 70 Gln Arg Arg Ala Ala  
 1 5

- (2) INFORMATION FOR SEQ ID NO:4:
- 5 (i) SEQUENCE CHARACTERISTICS:  
 (A) LENGTH: 15 amino acids  
 (B) TYPE: amino acid  
 (C) STRANDEDNESS: single  
 (D) TOPOLOGY: linear
- 10 (ii) MOLECULE TYPE: peptide
- (vii) IMMEDIATE SOURCE:  
 (B) CLONE: Immunogenic dnaJ Peptide
- 15 (ix) FEATURE:  
 (A) NAME/KEY: Peptide  
 (B) LOCATION: 1..15
- 20 (xi) SEQUENCE DESCRIPTION: SEQ ID NO:4:
- Gln Lys Arg Ala Ala Tyr Asp Gln Tyr Gly His Ala Ala Phe Glu  
 1 5 10 15
- 25 (2) INFORMATION FOR SEQ ID NO:5:
- (i) SEQUENCE CHARACTERISTICS:  
 (A) LENGTH: 15 amino acids  
 (B) TYPE: amino acid  
 (C) STRANDEDNESS: single  
 (D) TOPOLOGY: linear
- 30 (ii) MOLECULE TYPE: peptide
- 35 (vii) IMMEDIATE SOURCE:  
 (B) CLONE: Immunogenic dnaJ Peptide
- 40 (ix) FEATURE:  
 (A) NAME/KEY: Peptide  
 (B) LOCATION: 1..15
- (xi) SEQUENCE DESCRIPTION: SEQ ID NO:5:
- 45 Asp Glu Arg Ala Ala Tyr Asp Gln Tyr Gly His Ala Ala Phe Glu  
 1 5 10 15

## CLAIMS

1. A method for reducing exposure of a person who has  
5 RA or is predisposed to develop RA to arthritogenic  
peptides comprising:
  - a. administering a therapeutically effective  
dosage of nonabsorbable antibiotic enterally to  
the person; and,
  - 10 b. administering a therapeutically effective  
dosage of RA benign bacteria to the person.
2. The method according to Claim 1, wherein the RA  
15 benign bacteria are administered in an amount of  
about  $10^6$  to  $10^8$  bacteria per dose.
3. The method according to Claim 1, wherein the RA  
20 benign bacteria are selected from genera consisting  
of *Escherichia*, *Lactococcus*, *Klebsiella*, and  
*Proteus*.
4. The method according to Claim 1, wherein the genetic  
predisposition to RA is determined by detecting the  
25 presence of the RA susceptibility sequence on the  
person's HLA molecules.
5. The method according to Claim 1, wherein the person  
has early stage RA.
- 30 6. A method for reducing exposure of a person who has  
RA or is predisposed to develop RA comprising  
administering a therapeutically effective dosage of  
anti-arthritogenic peptide antibodies enterally to  
the person.
- 35 7. The method according to Claim 6, wherein the anti-  
arthritogenic peptide antibodies are administered in  
milk.

8. The method according to Claim 7, wherein the anti-arthritisogenic peptide antibodies are produced in milk.
- 5 9. The method according to Claim 6, wherein the anti-arthritisogenic peptide antibodies specifically bind the RA susceptibility sequence of dnaJ.
- 10 10. The method according to Claim 9, wherein the dnaJ is produced by bacteria selected from at least one of the genera consisting of *Escherichia*, *Lactococcus*, *Klebsiella*, *Proteus*, and *Salmonella*.
- 15 11. The method according to Claim 6, wherein the genetic predisposition to RA is determined by detecting the presence of the RA susceptibility sequence on the person's HLA molecules.
- 20 12. A method for reducing exposure of a person who has RA or is genetically disposed to develop RA to arthritisogenic peptides comprising treating the person according to the methods of Claim 1 and of Claim 6.
- 25 13. The method according to Claim 1 further comprising administering an immunologically effective dosage of recombinant, anti-arthritisogenic peptides to the person.
- 30 14. The method according to Claim 6, further comprising administering an immunologically effective dosage of recombinant, anti-arthritisogenic peptides to the person.

15. The method according to Claim 12, further comprising administering an immunologically effective dosage of recombinant anti-arthritogenic peptides to the person.

5

16. The method according to Claim 13, wherein the anti-arthritogenic peptides are administered concomitantly with immunostimulatory or immunosuppressant agents.

10

17. The method according to Claim 14, wherein the anti-arthritogenic peptides are administered concomitantly with immunostimulatory or immunosuppressant agents.

15

18. The method according to Claim 15, wherein the anti-arthritogenic peptides are administered concomitantly with immunostimulatory or immunosuppressant agents.

20



FIG. 1

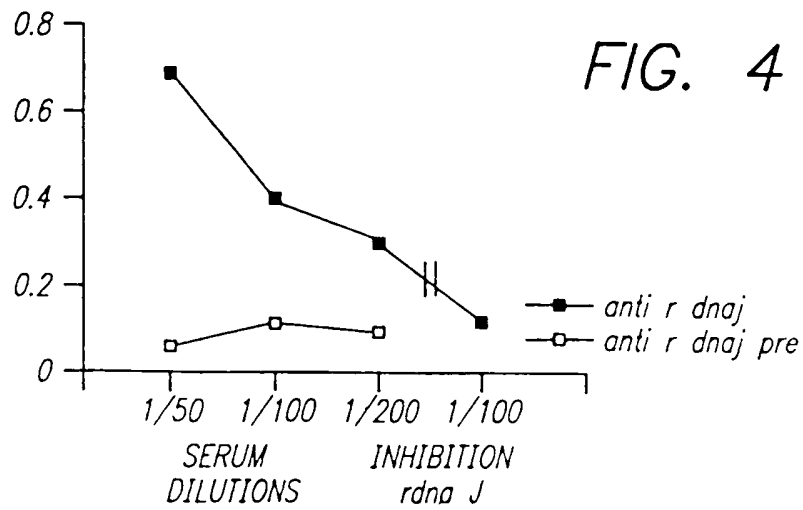
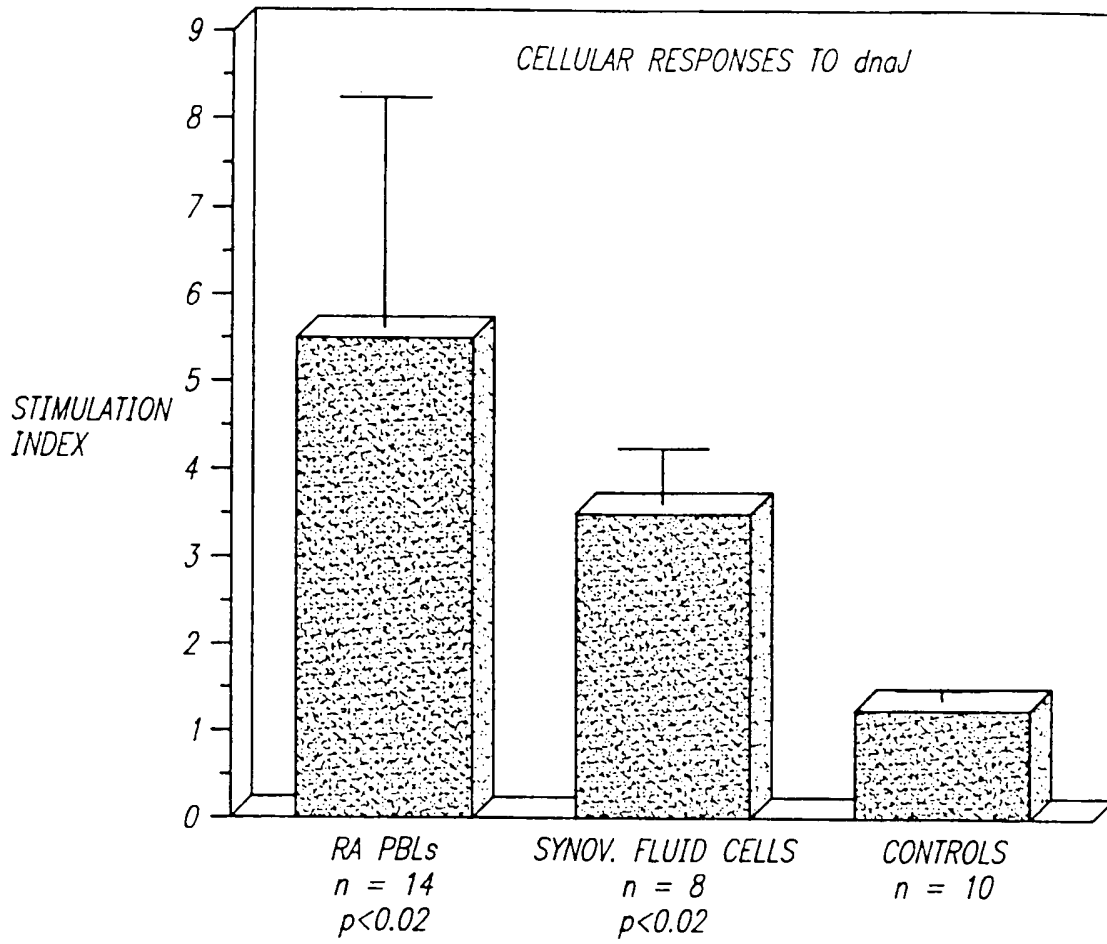


FIG. 2

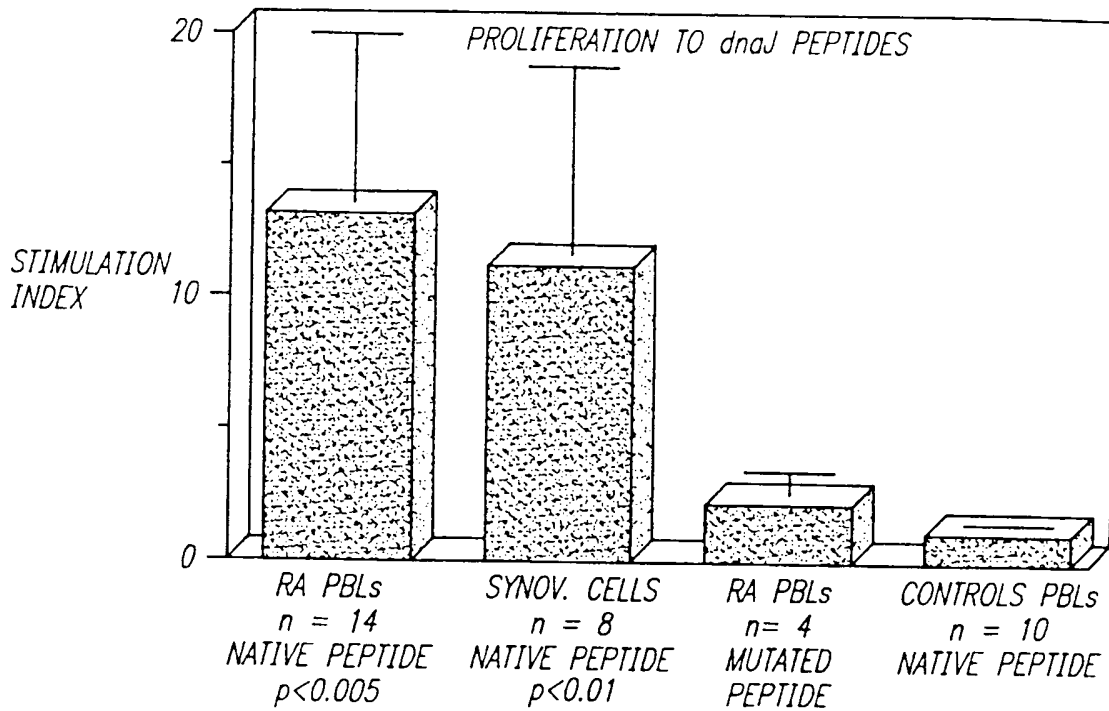
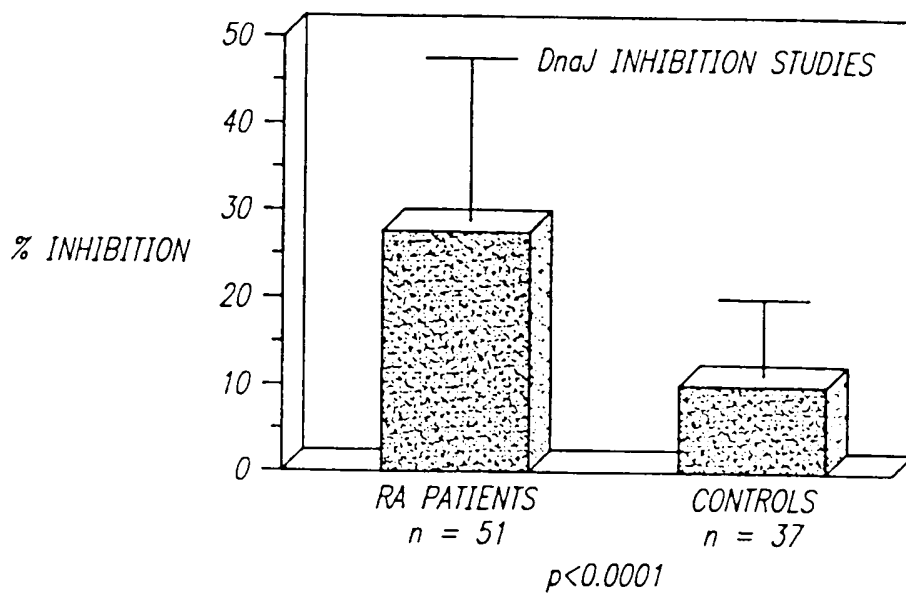


FIG. 3



# INTERNATIONAL SEARCH REPORT

International application No.  
PCT/US95/04896

**A. CLASSIFICATION OF SUBJECT MATTER**  
 IPC(6) : Please See Extra Sheet.  
 US CL : Please See Extra Sheet.  
 According to International Patent Classification (IPC) or to both national classification and IPC

**B. FIELDS SEARCHED**  
 Minimum documentation searched (classification system followed by classification symbols)  
 U.S. : 530/326, 327, 389.1, 389.5; 514/14, 199, 152; 424/164.1, 93.1, 234.1

Documentation searched other than minimum documentation to the extent that such documents are included in the fields searched

Electronic data base consulted during the international search (name of data base and, where practicable, search terms used)  
 APS/DIALOG (MEDLINE, EMBASE, BIOSYS, LIFESCI, WPI)

**C. DOCUMENTS CONSIDERED TO BE RELEVANT**

Category*	Citation of document, with indication, where appropriate, of the relevant passages	Relevant to claim No.
Y	US, A, 4,732,757 (STOLLE ET AL.) 22 March 1988, see entire document.	1-18
Y	The Journal of Pediatrics, Vol. 124, NO. 4, April 1994, (ALBANI ET AL.), "Immune responses to the Escherichia coli dnaJ heat shock protein in juvenile rheumatoid arthritis and their correlation with disease activity", pages 561-565, see entire document.	1-18

Further documents are listed in the continuation of Box C.       See patent family annex.

- |                                                                                                                                                                                                                                                                                                                                                                                                                                                                                                                                                                                                                                                                                            |                                                                                                                                                                                                                                                                                                                                                                                                                                                                                                                                                                                                                                                                                                                                                              |
|--------------------------------------------------------------------------------------------------------------------------------------------------------------------------------------------------------------------------------------------------------------------------------------------------------------------------------------------------------------------------------------------------------------------------------------------------------------------------------------------------------------------------------------------------------------------------------------------------------------------------------------------------------------------------------------------|--------------------------------------------------------------------------------------------------------------------------------------------------------------------------------------------------------------------------------------------------------------------------------------------------------------------------------------------------------------------------------------------------------------------------------------------------------------------------------------------------------------------------------------------------------------------------------------------------------------------------------------------------------------------------------------------------------------------------------------------------------------|
| <ul style="list-style-type: none"> <li>* Special categories of cited documents:</li> <li>*A* document defining the general state of the art which is not considered to be part of particular relevance</li> <li>*E* earlier document published on or after the international filing date</li> <li>*L* document which may throw doubts on priority claim(s) or which is cited to establish the publication date of another citation or other special reason (as specified)</li> <li>*O* document referring to an oral disclosure, use, exhibition or other means</li> <li>*P* document published prior to the international filing date but later than the priority date claimed</li> </ul> | <ul style="list-style-type: none"> <li>*T* later document published after the international filing date or priority date and not in conflict with the application but cited to understand the principle or theory underlying the invention</li> <li>*X* document of particular relevance; the claimed invention cannot be considered novel or cannot be considered to involve an inventive step when the document is taken alone</li> <li>*Y* document of particular relevance; the claimed invention cannot be considered to involve an inventive step when the document is combined with one or more other such documents, such combination being obvious to a person skilled in the art</li> <li>*Z* document member of the same patent family</li> </ul> |
|--------------------------------------------------------------------------------------------------------------------------------------------------------------------------------------------------------------------------------------------------------------------------------------------------------------------------------------------------------------------------------------------------------------------------------------------------------------------------------------------------------------------------------------------------------------------------------------------------------------------------------------------------------------------------------------------|--------------------------------------------------------------------------------------------------------------------------------------------------------------------------------------------------------------------------------------------------------------------------------------------------------------------------------------------------------------------------------------------------------------------------------------------------------------------------------------------------------------------------------------------------------------------------------------------------------------------------------------------------------------------------------------------------------------------------------------------------------------|

Date of the actual completion of the international search <b>04 AUGUST 1995</b>	Date of mailing of the international search report <b>22 AUG 1995</b>
------------------------------------------------------------------------------------	--------------------------------------------------------------------------

Name and mailing address of the ISA/US Commissioner of Patents and Trademarks Box PCT Washington, D.C. 20231 Facsimile No. (703) 305-3230	Authorized officer <i>Christopher Eisenschek</i> CHRISTOPHER EISENSCHENK Telephone No. (703) 308-0196
-------------------------------------------------------------------------------------------------------------------------------------------------------	----------------------------------------------------------------------------------------------------------------

## INTERNATIONAL SEARCH REPORT

International application No.  
PCT/US95/04896

C (Continuation). -DOCUMENTS CONSIDERED TO BE RELEVANT		
Category*	Citation of document, with indication, where appropriate, of the relevant passages	Relevant to claim No.
Y	J. Clin. Invest., Vol. 89, January 1992, (ALBANI ET AL.), "The Susceptibility Sequence to Rheumatoid Arthritis Is a Cross-reactive B Cell Epitope Shared by the Escherichia coli Heat Shock Protein dnaJ and the Histocompatibility Leukocyte Antigen DRB10401 Molecule", pages 327-331, see entire document.	1-18
Y	WO, A, 90/14835 (SCRIPPS CLINIC AND RESEARCH FOUNDATION) 13 December 1990, see entire document.	1-18

INTERNATIONAL SEARCH REPORT

International application No.  
PCT/US95/04896

A. CLASSIFICATION OF SUBJECT MATTER:  
IPC (6):

A61K 31/43, 31/54, 38/10, 39/00, 39/02, 39/395; C07K 16/00, 16/12, 7/04, 7/08

A. CLASSIFICATION OF SUBJECT MATTER:  
US CL :

530/326, 327, 389.1, 389.5; 514/14, 199, 152; 424/164.1, 93.1, 234.1